

Storage Unit Cost Reduction

Brion and Vera

Home Improvement Charter

Process Area: External Storage Unit

Metric	Current	New Goal
<input type="checkbox"/> Process Time		
<input checked="" type="checkbox"/> Number of Items (eliminated)	0	50
<input checked="" type="checkbox"/> Floor Space	120	60
<input type="checkbox"/> Success Rate		

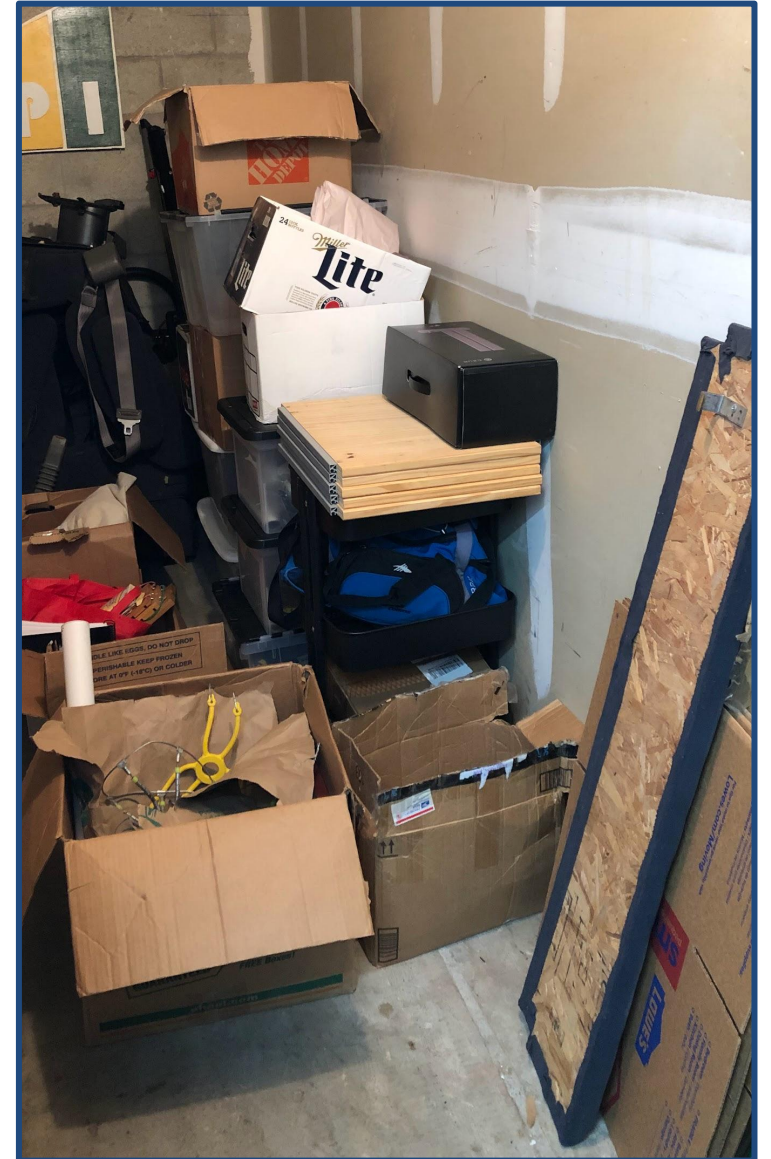
Why do you want to change this process?

The cost of storage is \$160/mo, or \$1,920 per year, want to lower costs and make sure we're not storing unnecessary items (declutter). Eventually want to eliminate the cost, but goal is to reduce cost and reduce # of items

Start Date: 1/29/24

Goal completion date: 2/26/24

Before Photos



TIM WOODS Waste Observation Form

T

Transportation Moving items or information

Observations

Travel to storage unit and back (1 min each way)

I

Inventory Items or information that customer has not received

Storage costs, about 40-80 sq ft, unit is 120 sq ft
Still opportunity to remove items

M

Motion Excessive movement within workspace

Walking upstairs, missing cart, no parking available must park across the street and carry items

W

Waiting for information or items to arrive

Cannot access 24/7, must wait until office is open

O

Over Production Doing work before it is needed

O

Over Processing Doing more work than necessary

Enter code multiple times to get it to work (when it does work)

D

Defects Mistakes and errors that need to be reworked

Door code doesn't work often, cart cannot be found

S

Skills Not using workers to fullest of abilities

Space Utilization

- Potential Items to Remove

- 2 van seats
- 9 bins
- Coffee maker
- 3 Suitcases with clothes
- 2 TVs and DVD player
- 8 random boxes
- Surfboard
- Pet gate and supplies
- Outdoor furniture pads
- Dog stroller

- Likely to Keep

- Large and small bookshelves (condensed)
- Rolling cart
- Vacuum cleaner
- Work display board
- Sleeping bags
- Cooler
- Picture frames and mirrors
- Coffee table
- Sewing machine
- Projector screen
- Posters
- Mattress padding

Improvements

- List the things you did to make the process better (at least 3)
- ✓ Donate unwanted items
- ✓ Consolidate as many items as possible into current living space
- ✓ Find lower cost storage unit size with lower monthly rental cost

Results

Donated

- Coffee maker
- 2 van seats

To be donated

- 1 TV
- Posters

Consolidated

- Surfboard
- 3 bins
- Rolling cart
- Coffee table

Storage Unit Pricing

Current Space = 10 x 12 = 120 sq ft @ \$168/mo

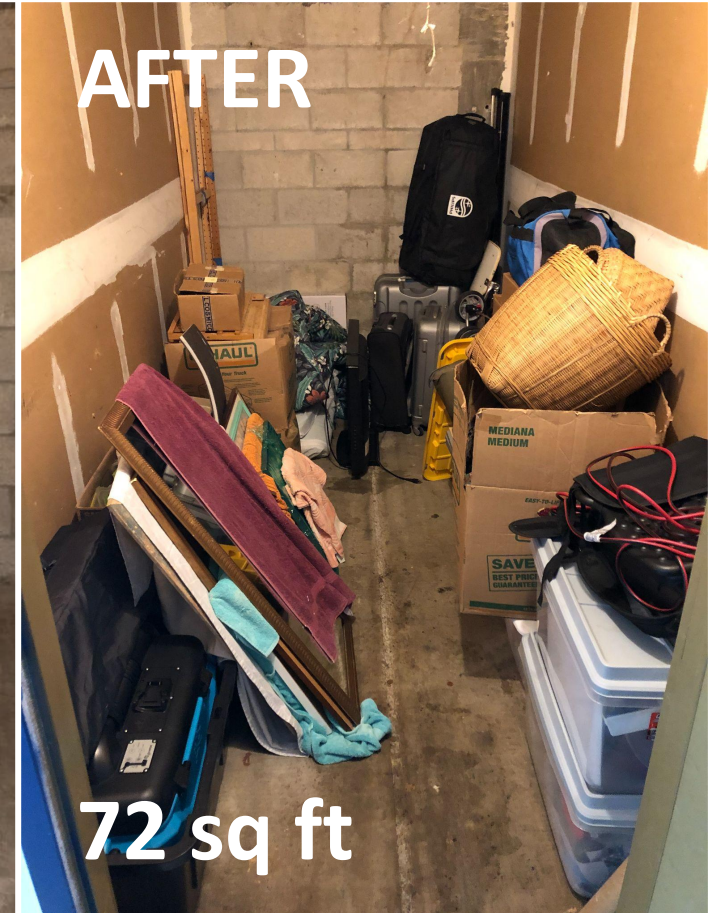
Estimated space needs = 5 x 10 = 50 sq ft @ \$80-110 / mo

Criteria for selection:









- Distance from house
- Monthly rent (incl. specials)
- Ease of access
- Climate-controlled
- Neighborhood safety
- Cleanliness
- Ease of move (vehicle, distance)

Criteria	Move Unit	New Location
Annual Cost	\$1068	\$1146
Distance	< 1 mile	3.5 miles
Cleanliness	Below Average	Good
Ease of move	Good	Difficult
Safety	Below Average	Average
Space	72 sq ft	60 sq ft
Climate	Yes	Yes

Storage Unit Photos



TIM WOODS Waste Observation Form

	Type	Observations
	Transportation Moving items or information	Travel to storage unit and back (1 min each way)
	Inventory Items or information that customer has not received	Storage costs, about 40-80 sq ft, unit is 120 sq ft Still opportunity to remove items
	Motion Excessive movement within workspace	Walking upstairs, missing cart, no parking available must park across the street and carry items
	Waiting for information or items to arrive	Cannot access 24/7, must wait until office is open
	Over Production Doing work before it is needed	
	Over Processing Doing more work than necessary	Enter code multiple times to get it to work (when it does work)
	Defects Mistakes and errors that need to be reworked	Door code doesn't work often , cart cannot be found
	Skills Not using workers to fullest of abilities	

Improvement Results

Metric	Before	Goal	After	% Improvement
<input type="checkbox"/> Process Time				
<input checked="" type="checkbox"/> Items Eliminated	0	50	20	
<input checked="" type="checkbox"/> Floor Space	120	60	72	40%
<input type="checkbox"/> Success Rate				
<input checked="" type="checkbox"/> Annual Cost	\$1920	\$1200	\$1068	43%

Project Completion Date: 2/15/24

Improvement Results (2025)

Metric	Before	Feb24	May25	% Improvement
<input type="checkbox"/> Process Time				
<input checked="" type="checkbox"/> Items Eliminated	0	50	0	
<input checked="" type="checkbox"/> Floor Space	120	60	0	
<input type="checkbox"/> Success Rate				
<input checked="" type="checkbox"/> Annual Cost	\$1920	\$1116	\$0	

Project Completion Date: 04/21/25